

# Elisava Welcome *Guide*

Font in Use  
→ Elisava Sans VF

## Nº02

Includes → 36 Styles  
& 874 Glyphs

( 24 → 25 )  
Flow0;

Elisava, Barcelona School  
of Design & Engineering

Your manual of instructions for a safe journey. Please take a moment to learn the user's manual of Elisava. This guide will give you all the information you'll need for your daily life at the university.

Welcome	02
University Maps	03
Useful Information	07
Schedule	09
Out-of-class University Life	10
What's going on?	11

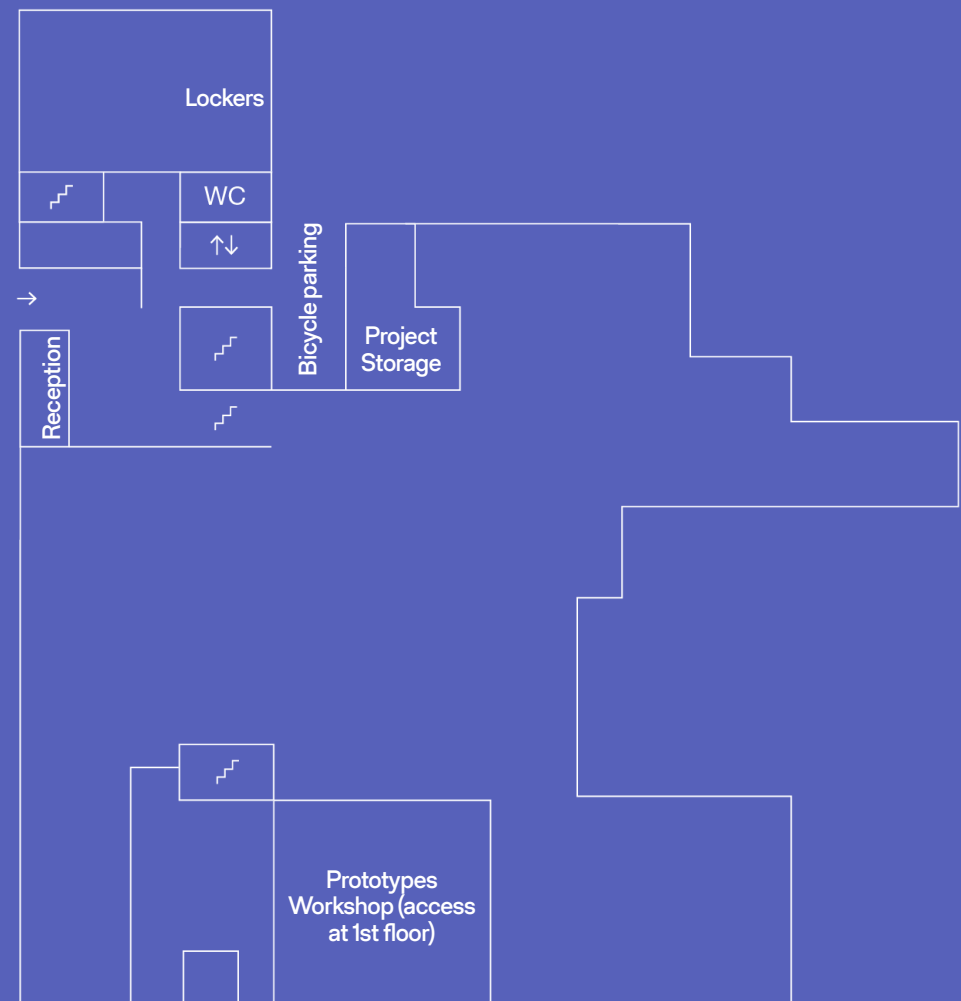
Use me, don't stack me. Welcome. We are a team. This is the moment when you start your own adventure. We write this manual book to be a helpful guide to allow you to have control and confidence when you arrive at Elisava. A travel guide, a manual is important for any trip. It can help you with details, to find surprises and to know how to get the most of your journey.

## Welcome, Bienvenida, Benvingut

Every so often though we like to get really specific with them and deep dive into the complexities of the university. Make your mind ready to discover Elisava much easier. And do not forget come to ask whenever you need. Now is your moment. Seat back, relax and enjoy your time.

# University Maps

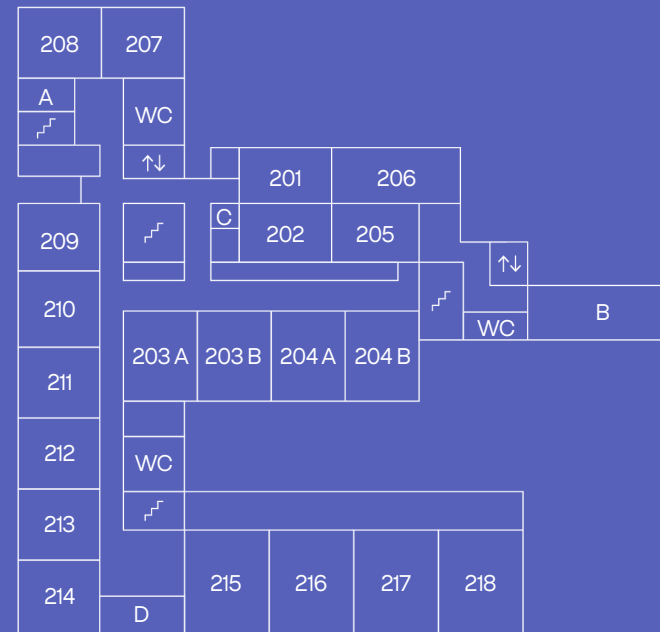
## Ground Floor



## First Floor



## Second Floor



A.  
Masters Admissions  
and Student Welfare

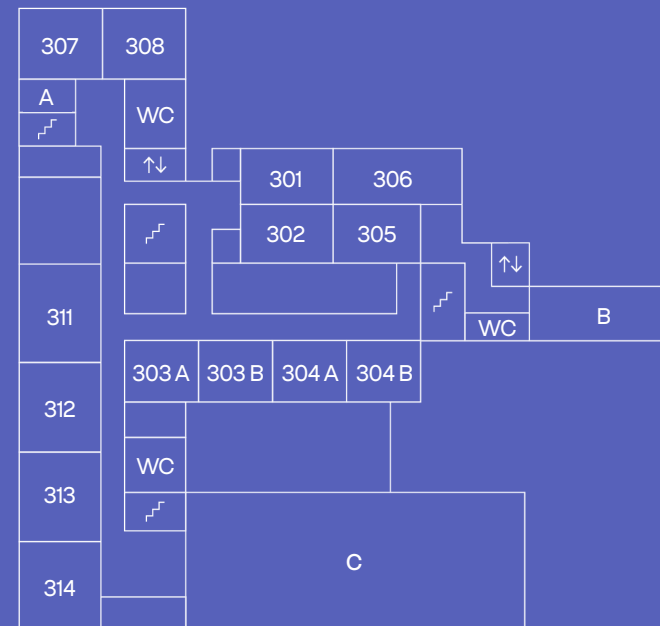
B.  
Bachelor Professors'  
Room

C.  
Reprography  
Service

D.  
Elisava Business  
& Entrepreneurship

PC Rooms  
209, 210, 211,  
213, 214

## Third Floor



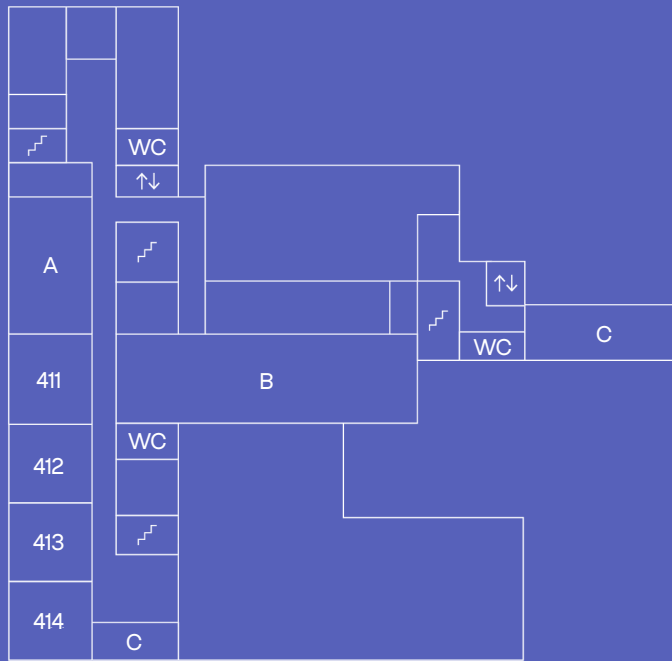
A.  
Masters  
Coordination

B.  
Masters' and  
Postgraduate  
Programmes  
Professors' Room

C.  
Terrace

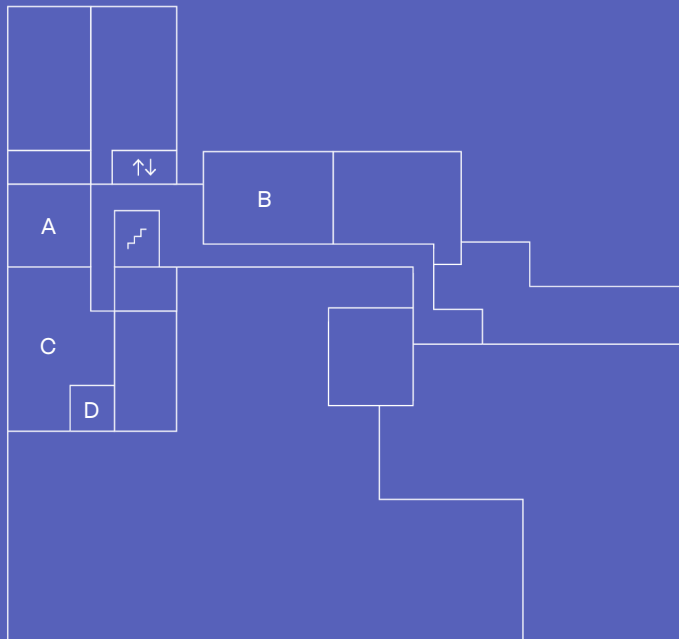
# Unleashing your potential—Useful Information

## Fourth Floor



- A. Administration
- B. Enric Bricall Library
- C. Elisava Business and Entrepreneurship

## Basement Floor



- A. Workshops Room
- B. Media Lab
- C. Interaction/ Electronics Lab + Motion Capture
- D. Aha Radio

Read through this guide and keep it handy. It will be very useful! It's a good introduction, and it will help you get situated with a broad overview of the university. 7

## EVERYTHING YOU NEED IN ONE SINGLE PLACE

Check our new Elisava Campus, where you will find all the information and resources you may need during your academic years at Elisava.

→ [campus.elisava.net](https://campus.elisava.net)

Among others, you will be able to:

- Book the labs & workshops
- Check your e-mail, your academic info and your grades
- Go directly to Microsoft Teams
- Download specific software (Microsoft and many more!)
- Check your class schedule and the academic calendar
- Access to Moodle and view the courses you have enrolled
- Consult the books and magazines available at the library
- Get internships opportunities
- Get all the staff contacts
- Stay tuned to all Elisava's news & events

## CONNECT WITH ELISAVA

Elisava Life App: Find out about everything that's happening at Elisava through our app.

There are many groups for sharing inspiration, finding accommodation, sharing materials for projects, chatting or hanging out into the

vibrant cultural life in Barcelona. Download it from the App Store or Google Play.

## FOLLOW ELISAVA ON SOCIAL MEDIA!

- Instagram & Twitter  
@elisavabcn
- Facebook & TikTok  
@elisavabarcelona
- LinkedIn  
[linkedin.com/school/elisava](https://linkedin.com/school/elisava)

## ELISAVA ACCESS CREDENTIALS

Set up your email account!

A few days before beginning classes and after registration, you'll get an e-mail containing your username and password to access Elisava's resources. The IT team is here to help you with any problems.

## WI-FI CONNECTION

You'll have access to free Wi-Fi throughout the university. Sign in with your username and password. Check out the Elisava Campus for all the necessary configuration info, as well as the users' manuals.

## GET YOUR STUDENT ID CARD

Once you download Elisava Life app, you'll be able to get your digital university ID in the personal area of the application. Remember that your ID will get you discounts at many of Barcelona's museums and shops!

# Where & When to find us

La Rambla 30 - 32,  
08002 Barcelona

Opening times

Monday — Friday  
8.00 a.m. — 10 p.m.

Open Saturdays

At the end of each semester, coinciding with exams and final presentations, we open our doors on two Saturdays so you can come and meet up with your classmates. You'll have access to the library, students' rooms, computer rooms, and the prototypes workshop. Check the academic calendar for the exact dates.

# Out-of-class University Life: Stay up to date & join the Community

## ELISAVA EQUALITY [igualtat@elisava.net](mailto:igualtat@elisava.net)

Elisava Equality has the aim of combating inequality associated with sex, gender, sexual identity or orientation, and violence against women. Rosario Hernández is the university's Equality officer, responsible for ensuring compliance with the equality plan.

## THEATRE [teatre@elisava.net](mailto:teatre@elisava.net)

Is theatre your thing? Join the university's theatre group. Members include undergraduate and master's students, professors and administrative staff. Directed by Elisava Alumni Mònica Molins and Núria Blay, during the first quarter you'll take weekly classes in one of two levels. Beginning in January, you'll prepare a play that will premiere in May. Stay tuned for this year's welcome meeting, which will take place during the first weeks of classes.

## CHOIR [gospel@elisava.net](mailto:gospel@elisava.net)

Cor 4 18 is a choral group open to the entire Elisava community. The choir is responsible for performing at Elisava's graduation events, Christmas concerts and other events.

## AHA RADIO [@aha.radio](https://aha.radio)

An initiative launched by students: Elisava's online radio is the speaker for the university community. Podcasts can be listened to on the website [elisava.net/podcasts](https://elisava.net/podcasts), Mixcloud, Spotify and iVoox. If you want to join AHA Radio or suggest a new radio show you can contact them by DM on Instagram or by e-mail ([aharadio@elisava.net](mailto:aharadio@elisava.net)).

## ELISAVA NIGHTS [@elisavanights](https://@elisavanights)

Elisava Nights is a group of students who organise parties, gatherings and other events at Elisava. If you'd like to participate, send them a DM on Instagram.

# What's going on?

Keep up with everything happening outside of class and get involved. There's a lot going on at Elisava! Throughout the year, you'll have many opportunities to attend lectures and workshops, and to participate in projects in collaboration with companies, etc. Stay tuned to the app, social media and the online calendar and take advantage of all these opportunities!



## EXHIBITIONS

Don't miss the exhibitions in the Àgora, the Atri (1st floor), and other spaces at the university.

## LECTURES

Talks with inspiring international professionals of design, engineering, arts, communication, architecture... in the Auditorium Aleix Carrió.

## WORKSHOPS & INNOVATION LABS

Collaborate on projects with companies, institutions, NGOs, etc. You can join these transversal projects with students from other courses. You'll be more than welcome to participate in the yearly Open Calls.

## ELISAVA IMPULS

This is our entrepreneurship programme, where we promote, drive and accompany opportunities of the Elisava Ecosystem in order to impact the market, the planet and society through the generation of spin offs / startups or the projects' licensing to the industry.

## ELISAVA ALUMNI + LA CAPELL [alumni@elisava.net](mailto:alumni@elisava.net)

Every year, Elisava Alumni and La Capell join forces to boost and foster emerging design within the local community. Have you heard about this collaboration? As a student or Alumni

you will have the chance to bring a product to market, you can submit your proposal to this yearly open call.

Elisava Alumni wants to create and nurture a community that becomes a space for the exchange of knowledge, relationships, opportunities, inspiration and advantages for all its members in the fields of design, engineering, entrepreneurship and innovation, both locally as international.

Stay tuned of the multiple events that they organize (networking sessions, meetings, talks, parties...). You can also take part of them!

## LANGUAGES – CIC [idiomes@iccic.edu](mailto:idiomes@iccic.edu)

If you want to study English, French or German, you'll enjoy a 10% discount on courses at the CIC Language School (Via Augusta and Gràcia locations). Just show your student ID card when you sign up.

## STUDENTS E-MAIL

The school is yours, it is a very important part of your daily life, and at Elisava we want to know your opinion to make you feel at home. We want to know your suggestions for improvement and new ideas, or any questions you would like to share. Send us an e-mail to [students@elisava.net](mailto:students@elisava.net)!